

HM-4X50A-Russia 规格书 (电源滤波器)

◆ 技术参数 Specification

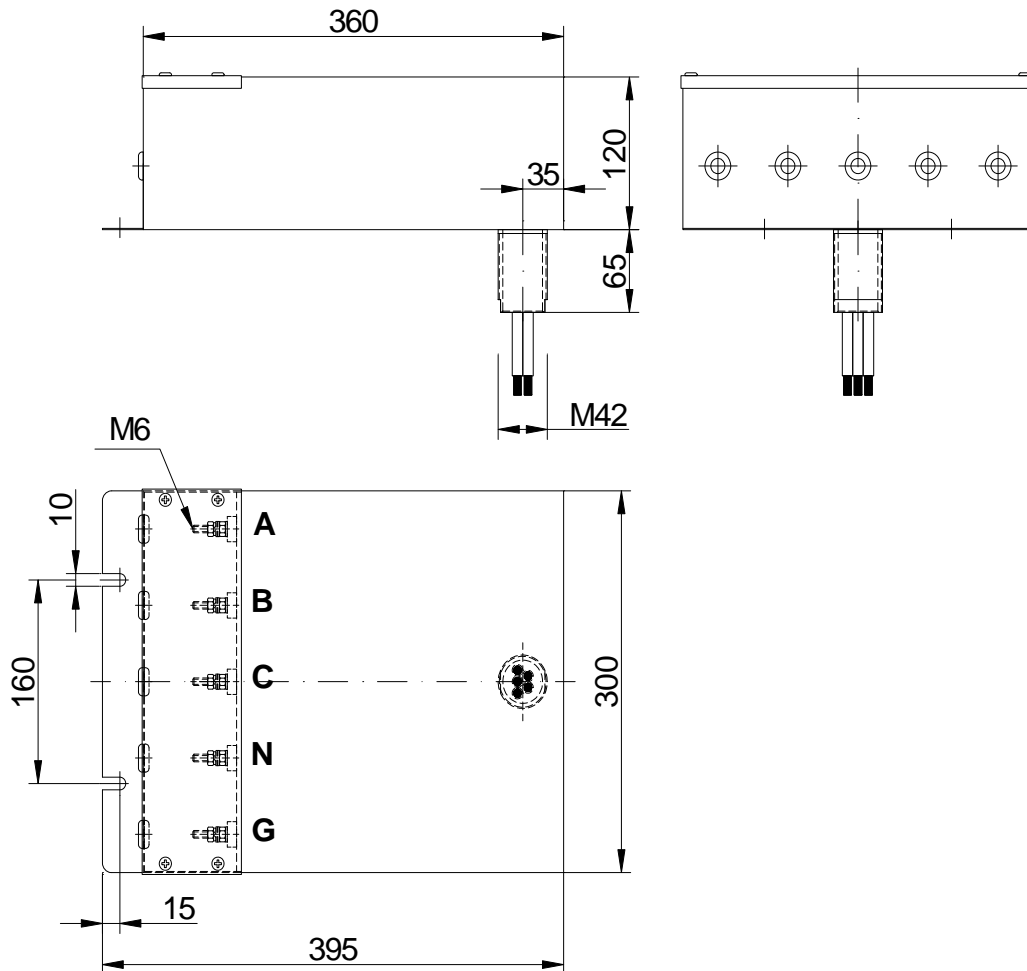
| | |
|------------------------|------------|
| 额定电压 Rated voltage | 440/250VAC |
| 额定电流 Rated current | 50A |
| 工作频率 Frequency | DC-60Hz |
| 气候类别 Climatic category | 25/070/21 |

典型插入损耗 Typical insertion loss

| | |
|-----------|------------|
| 频率 | 150K-18GHz |
| 插入损耗 (dB) | ≥100dB |
| 共模、差模 | |

◆ 外形尺寸 Dimension

Outline Drawing and Dimensions: (mm)



电感: Σ 每线 (A, B, C, N) $\geq 0.65\text{mH}$; Σ 地线 (G) $\geq 160\mu\text{H}$

线与线 (A, B, C 之间): $\Sigma C=2.75\mu\text{F} \pm 20\%$

线与中线 (A, B, C 与 N 之间): $\Sigma C=5.3\mu\text{F} \pm 20\%$

中线与地 (N 与外壳之间): $\Sigma C=11.7\mu\text{F} \pm 20\%$

线与地 (A, B, C 与外壳之间): $\Sigma C=4.5\mu\text{F} \pm 20\%$

地线 G 与外壳之间: $\Sigma C=22\mu\text{F} \pm 20\%$

◆ 特点与应用 Features & Applications

工作频带宽，插入损耗高: Wide operating band, high insert loss

干扰抑制能力强: Strong ability for restrain interference

低压降，中等漏电流: Low voltage drop ,low leakage current

用于电磁屏蔽房、屏蔽柜、电子方舱、信息安全保密房、医院 CT、核磁共振房、可控硅交流设备、电源净化设备的电源端的滤波 Use for filter in electro-magnetic shielding room、shielding cabinet、electronic、square cabin、information security room 、CT equipment of hospital、nuclear-magnetic、resonance room、SCR current converting equipment、power terminal of the equipment for power purification.